

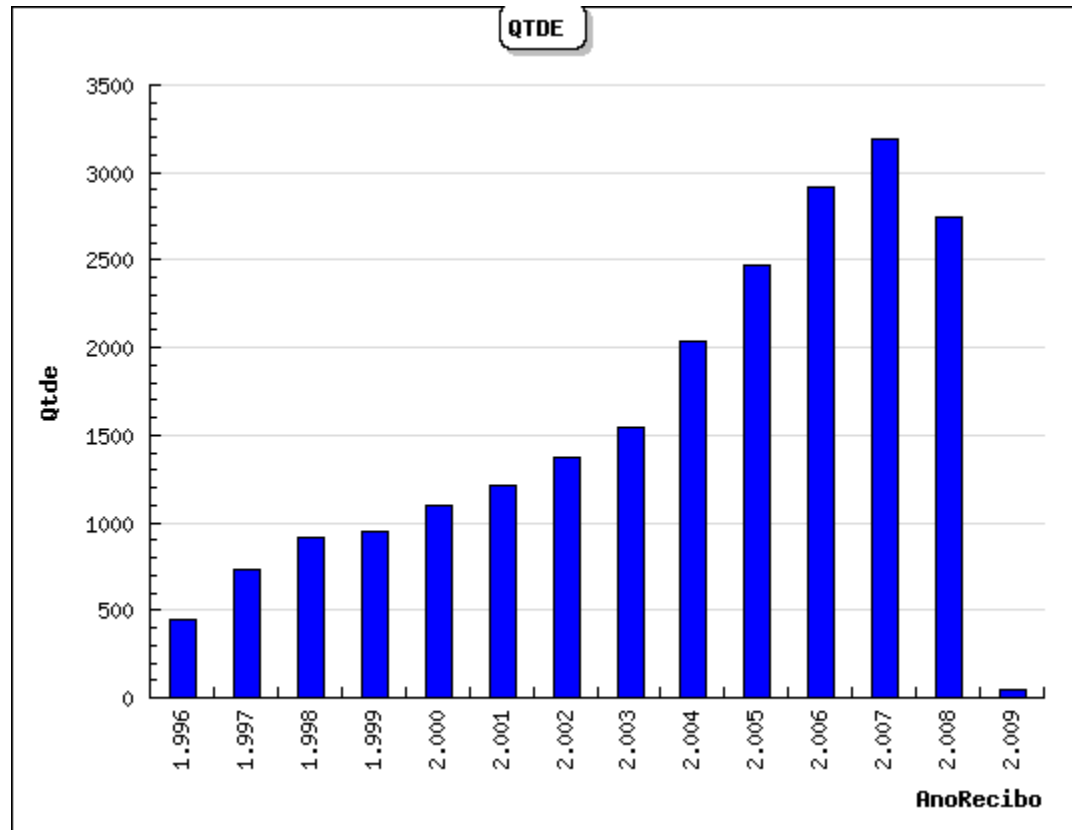


Mecenato
Projetos com captação de recursos por ano e área cultural

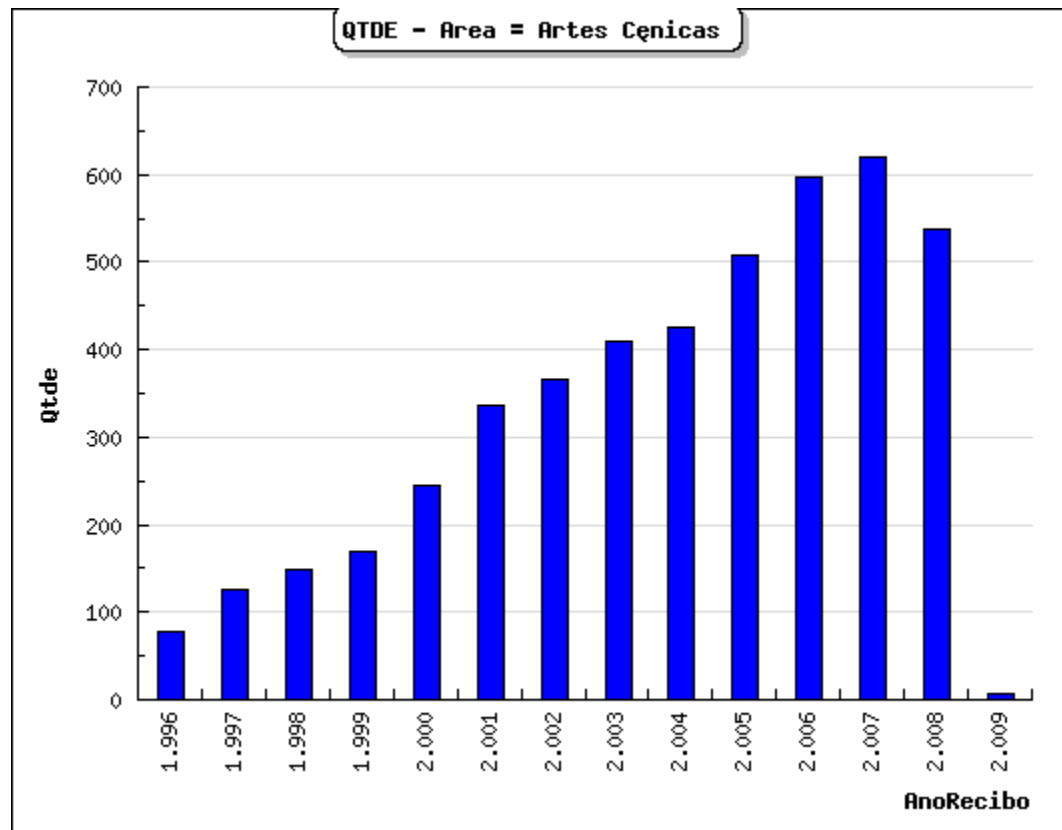
03/02/2009

RESUMO	1.996	1.997	1.998	1.999	2.000	2.001	2.002	2.003	2.004	2.005	2.006	2.007	2.008	2.009	Total
Artes Cênicas	77	126	149	169	245	336	367	409	426	507	597	620	538	7	4.573
Artes Integradas	59	112	115	70	45	51	85	101	141	196	261	325	276	4	1.841
Artes Visuais	37	61	90	90	94	112	115	104	155	209	243	244	184	6	1.744
Audiovisual	82	121	123	111	104	132	158	146	209	284	382	435	414	11	2.712
Humanidades	64	109	144	185	240	237	275	350	471	461	551	598	564	11	4.260
Música	68	110	161	200	225	226	251	278	434	576	604	712	550	7	4.402
Patrimônio Cultural	64	97	133	130	142	118	120	154	204	239	273	252	218	1	2.145
Total Geral	451	736	915	955	1.095	1.212	1.371	1.542	2.040	2.472	2.911	3.186	2.744	47	21.677

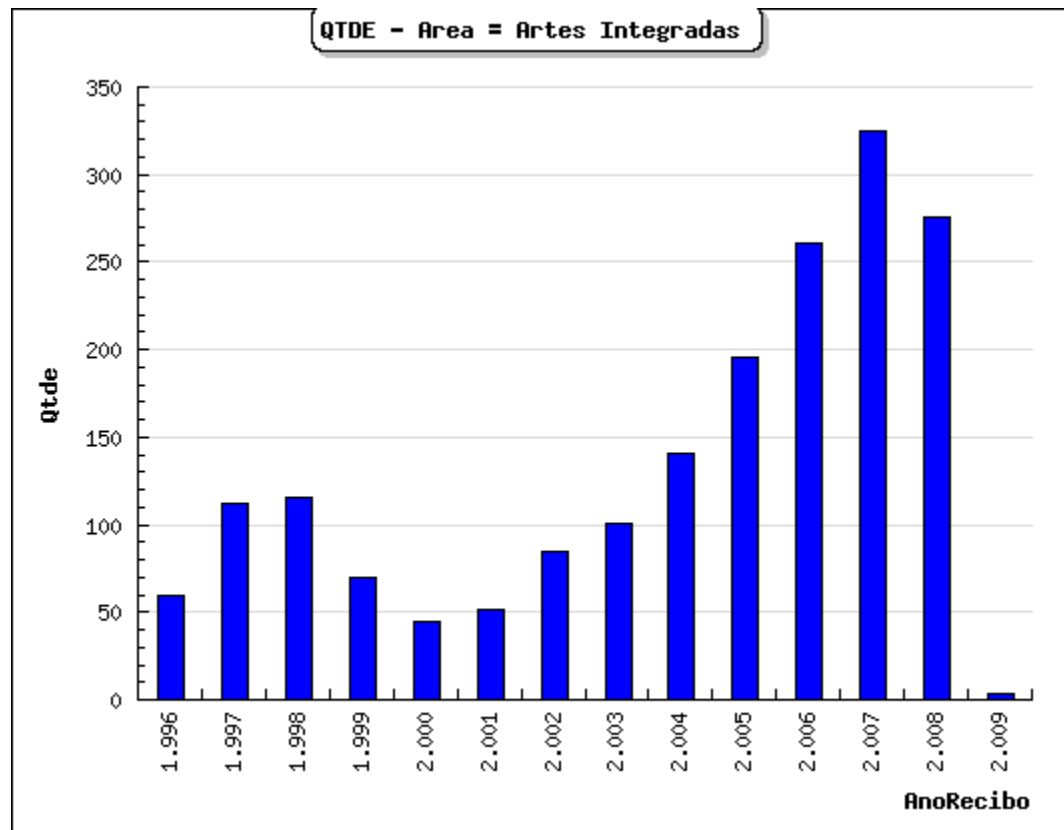
QTDE



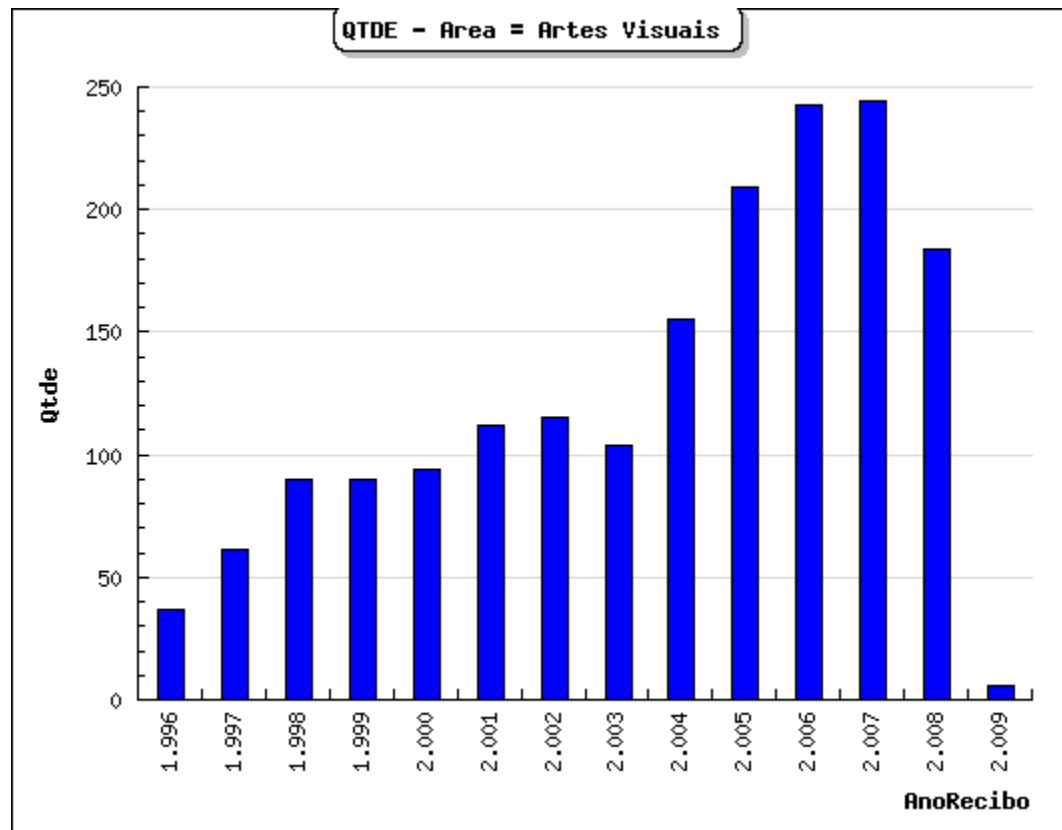
QTDE – Area = Artes Cênicas



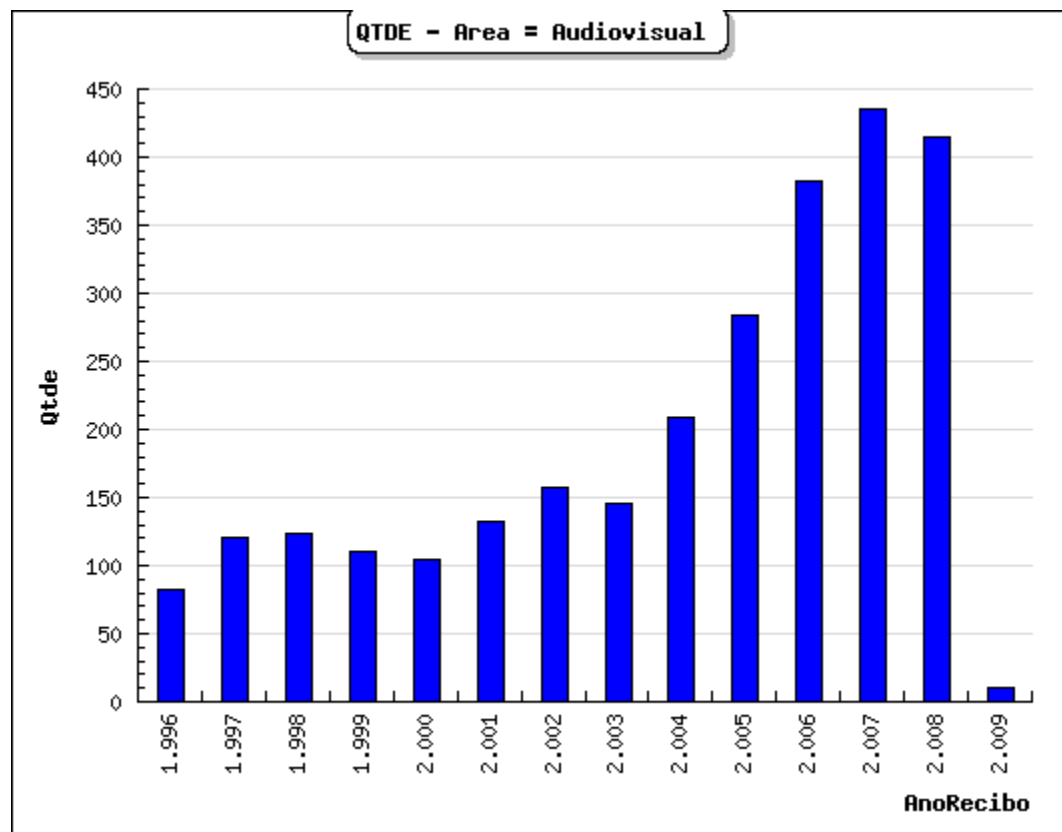
QTDE – Area = Artes Integradas



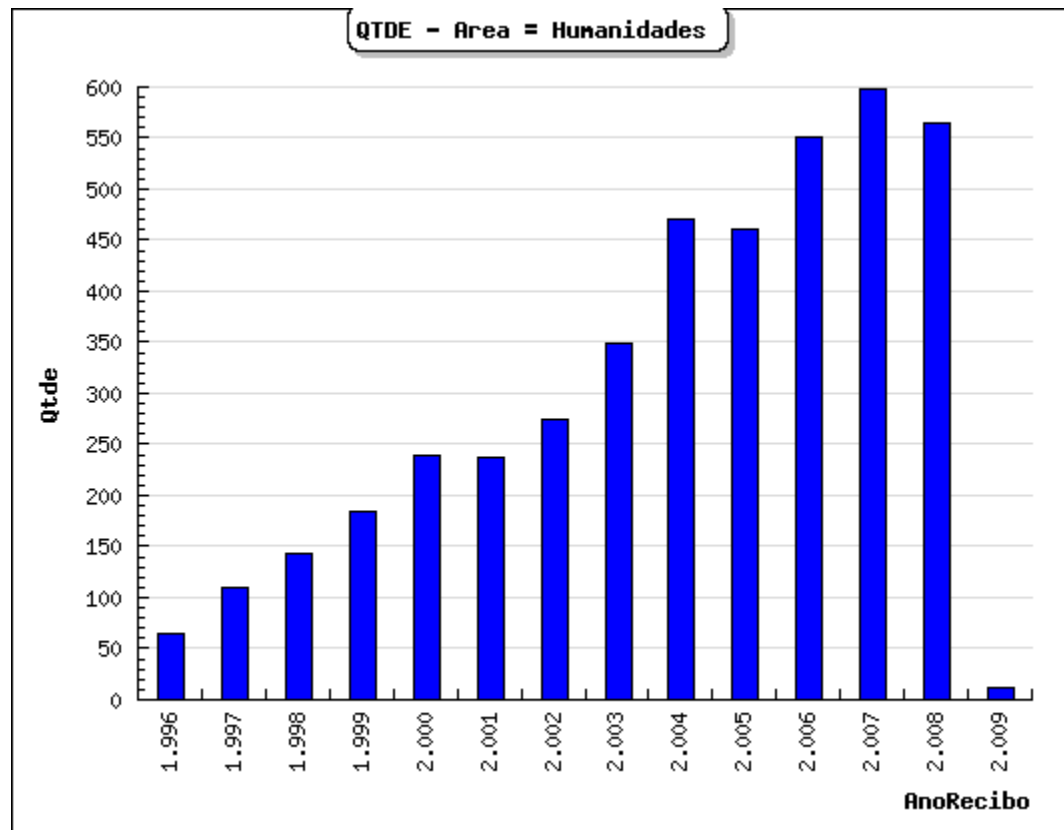
QTDE – Area = Artes Visuais



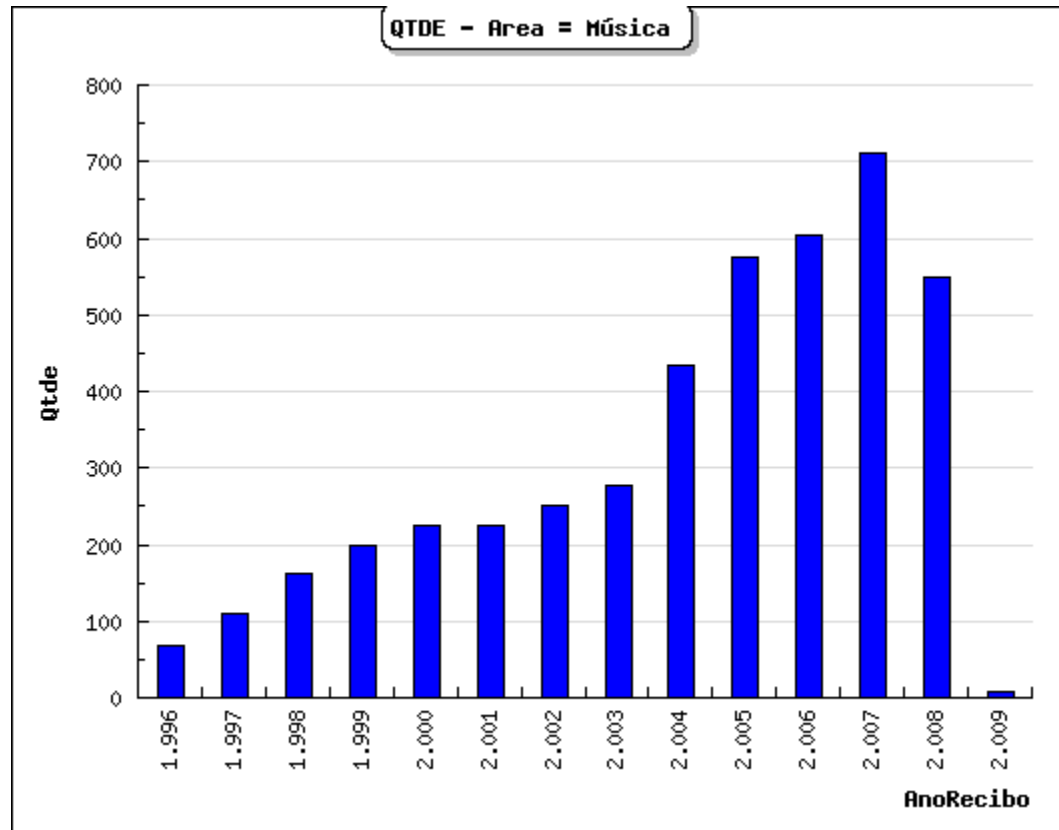
QTDE - Area = Audiovisual



QTDE – Area = Humanidades



QTDE - Area = Música



QTDE – Area = Patrimônio Cultural

